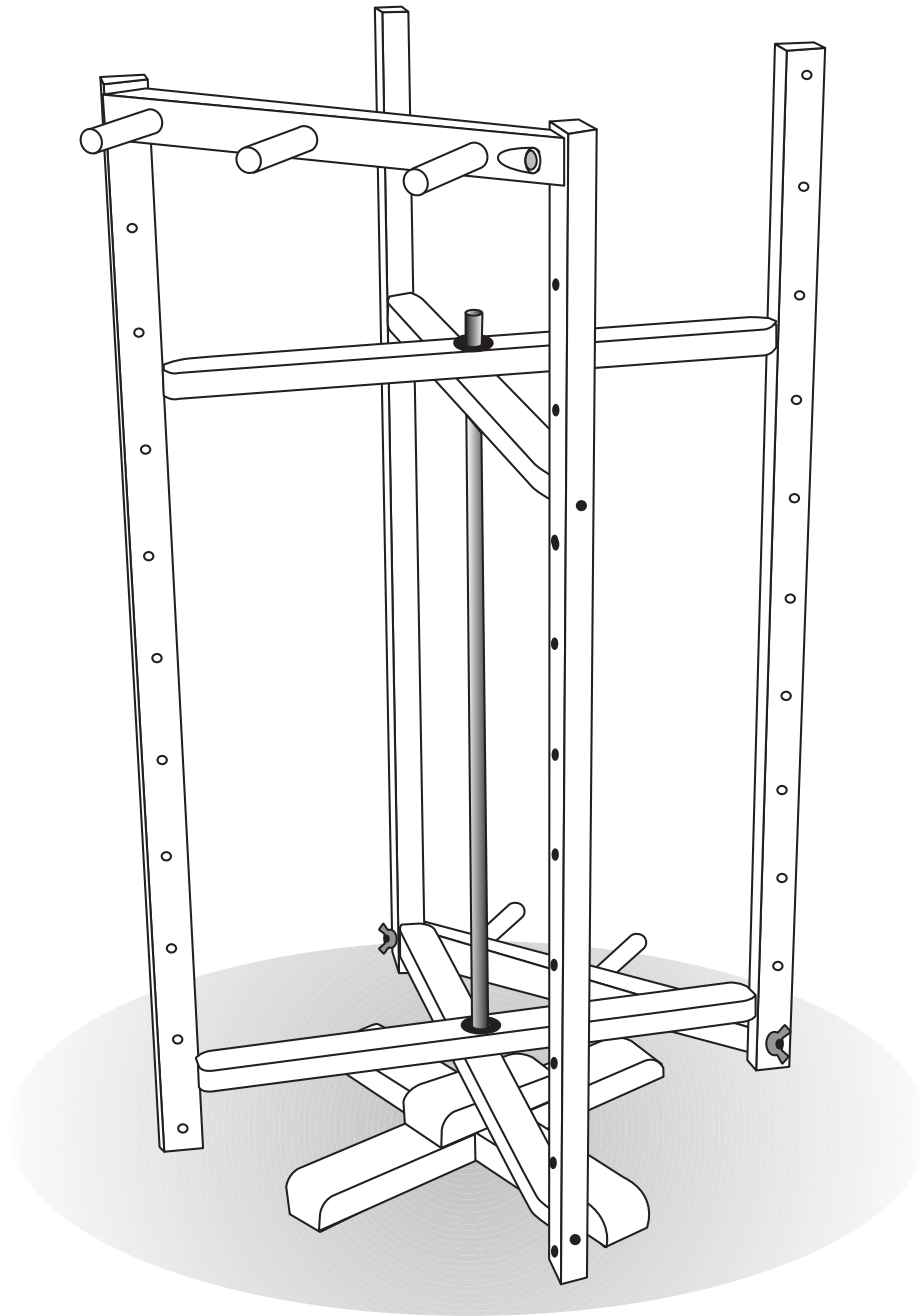
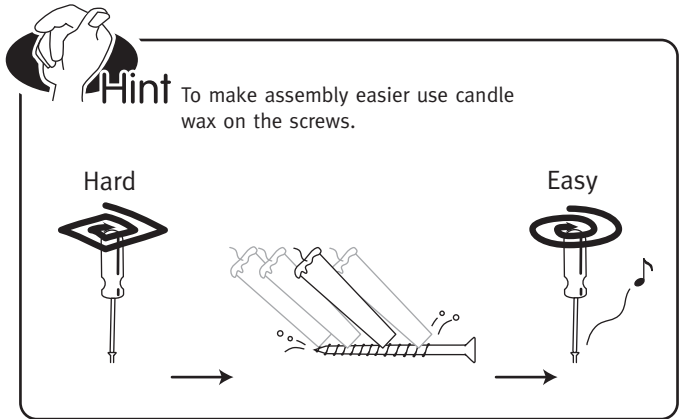
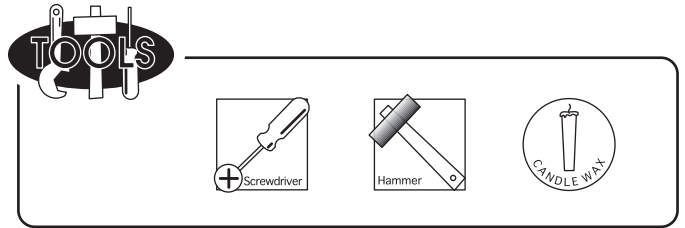
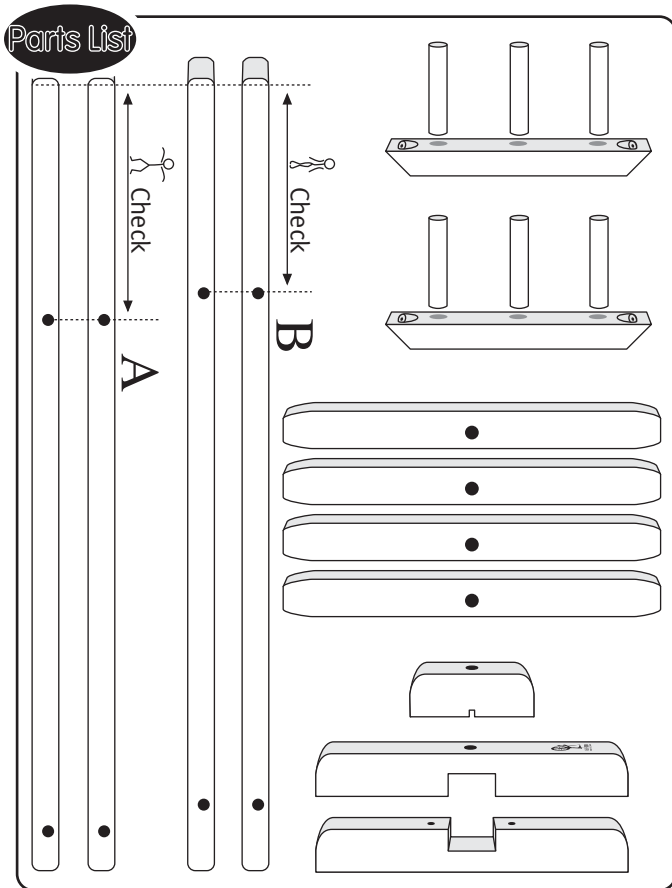


WARPING MILL

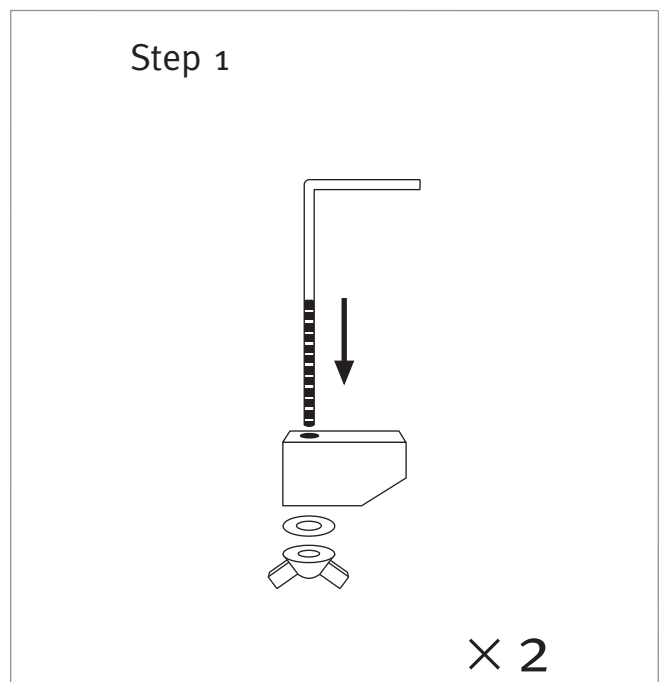
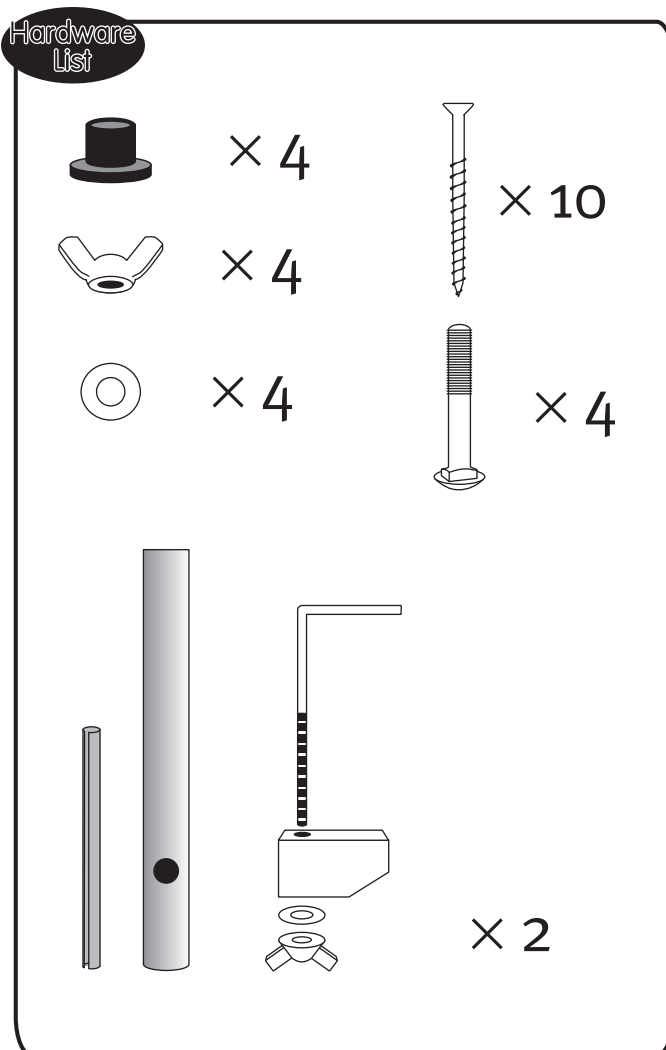




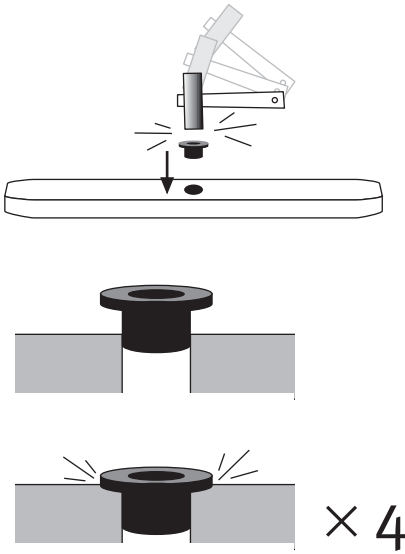
Before Commencing
Read the instructions completely, identify the parts and note the assembly sequence. Then use the fine sandpaper supplied to remove any sharp corners or edges.

Finishing the Wood
We recommend that the wood surfaces be waxed before assembly. This protects the kiln dried wood from climatic changes and enhances the beauty of the wood. Avoid waxing the dowel ends or holes.

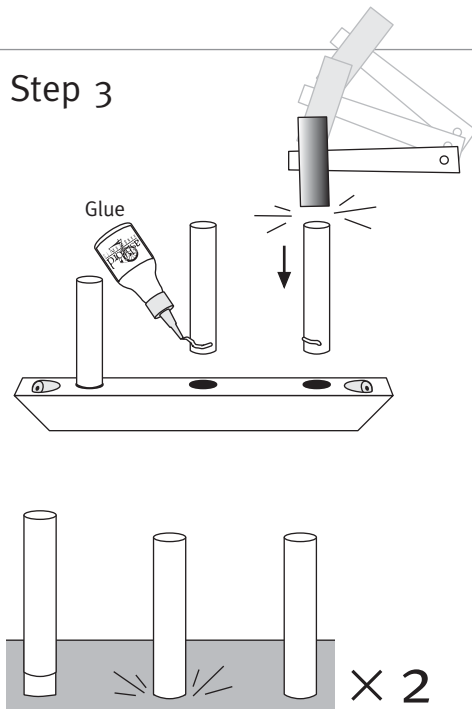
For the Ultimate Finish
The Ashford Wax Finish will enhance the natural colours and beauty of the native New Zealand Silver Beech timber which has a lovely variety of colour and grain.



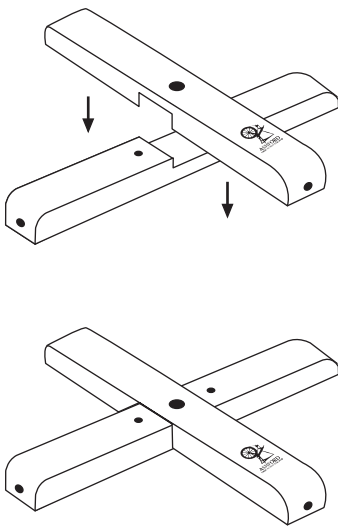
Step 2



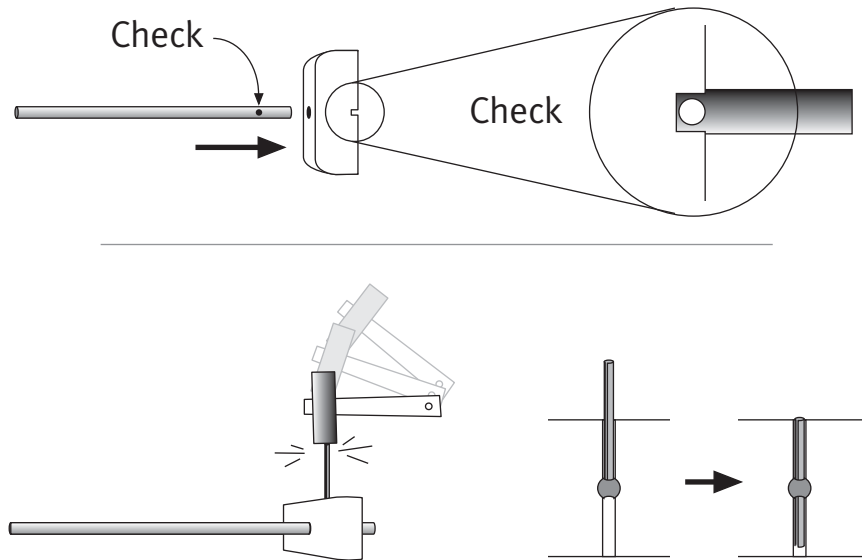
Step 3



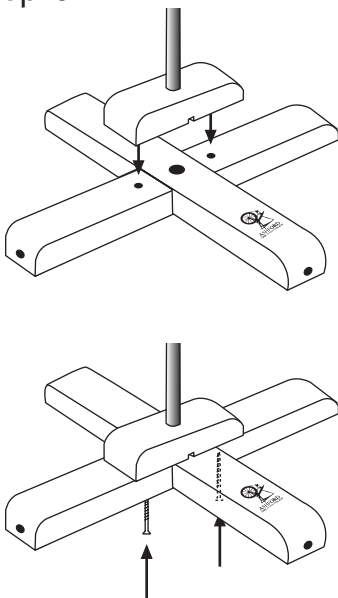
Step 4



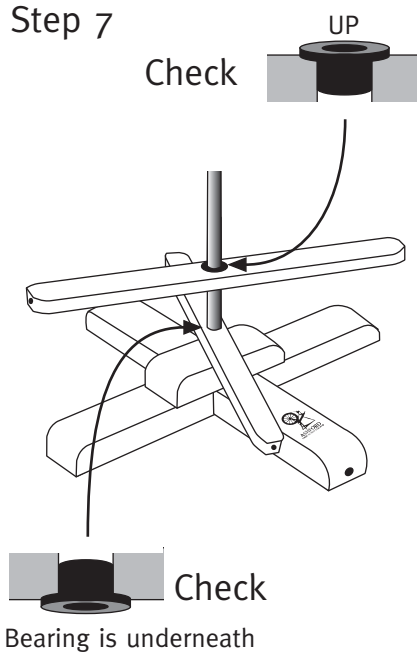
Step 5



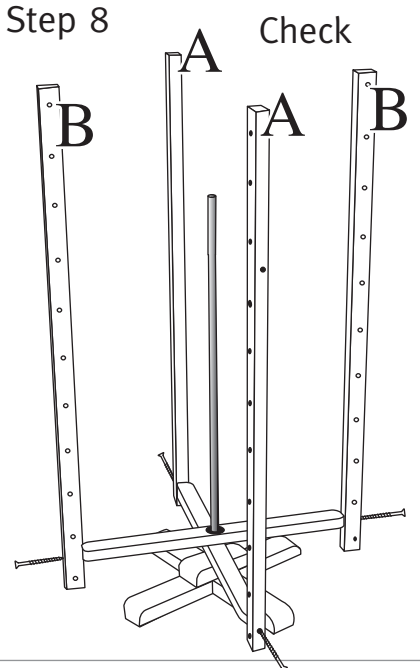
Step 6



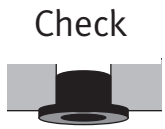
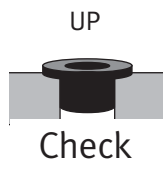
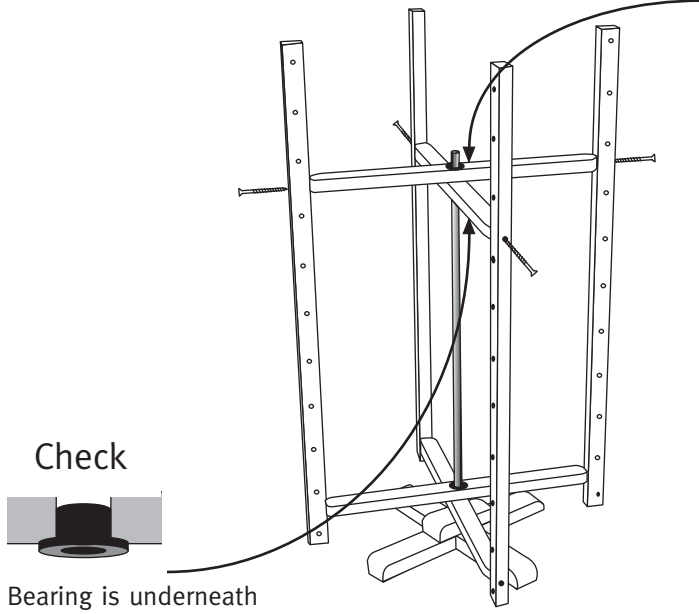
Step 7



Step 8

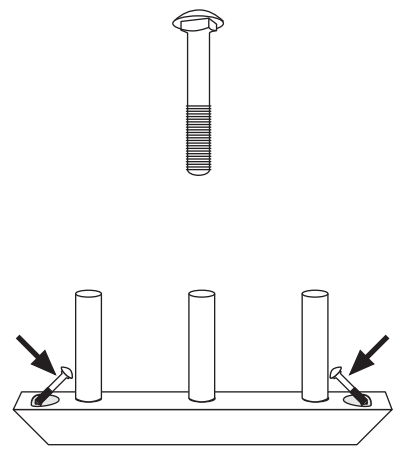


Step 9

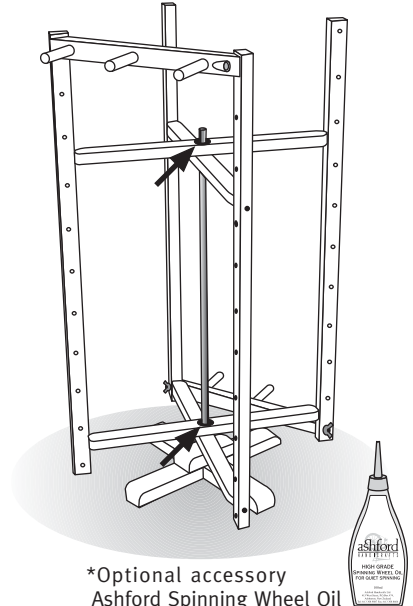
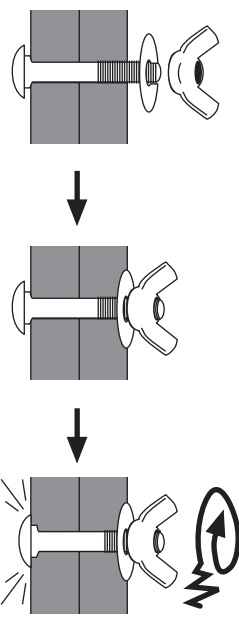
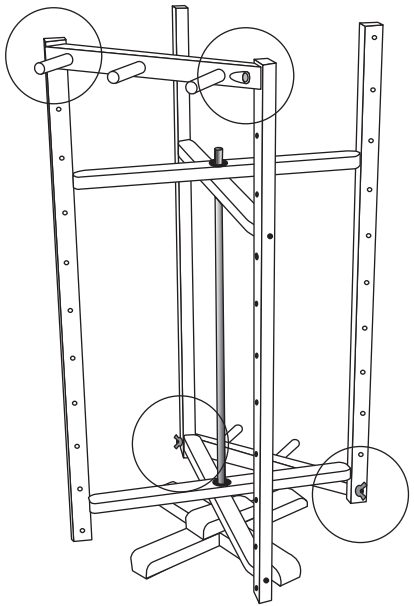


Bearing is underneath

Step 10



Step 12



*Optional accessory
Ashford Spinning Wheel Oil

